



QUIZ

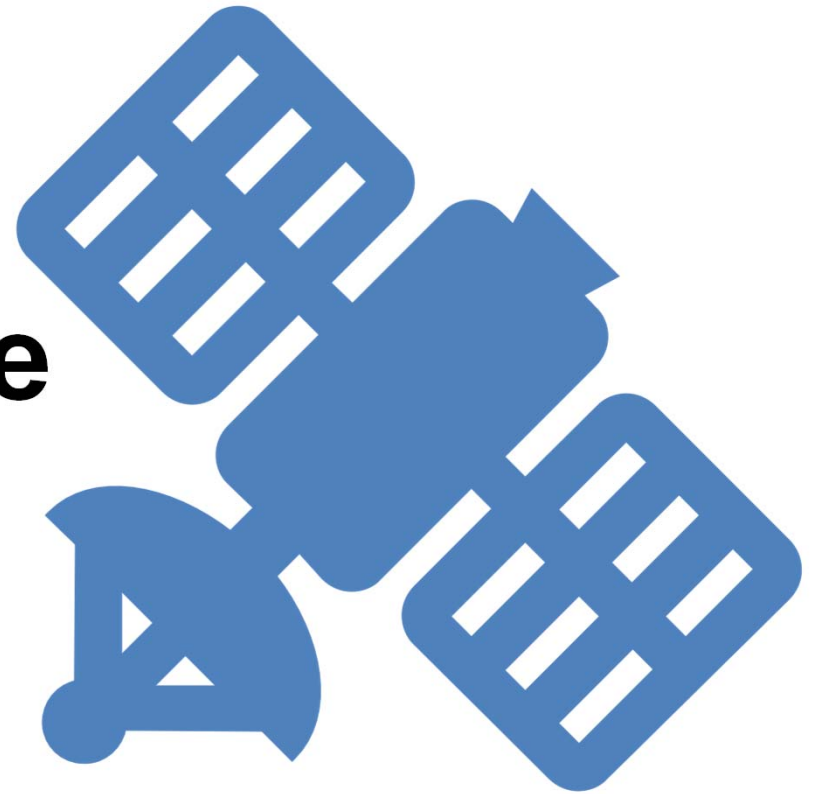
Satellite Image

Interpretation

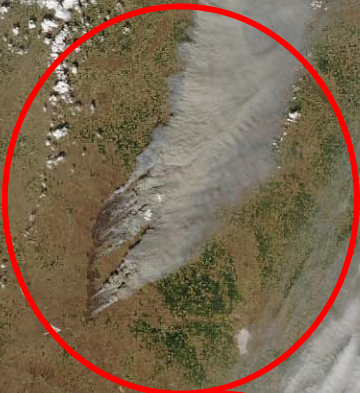
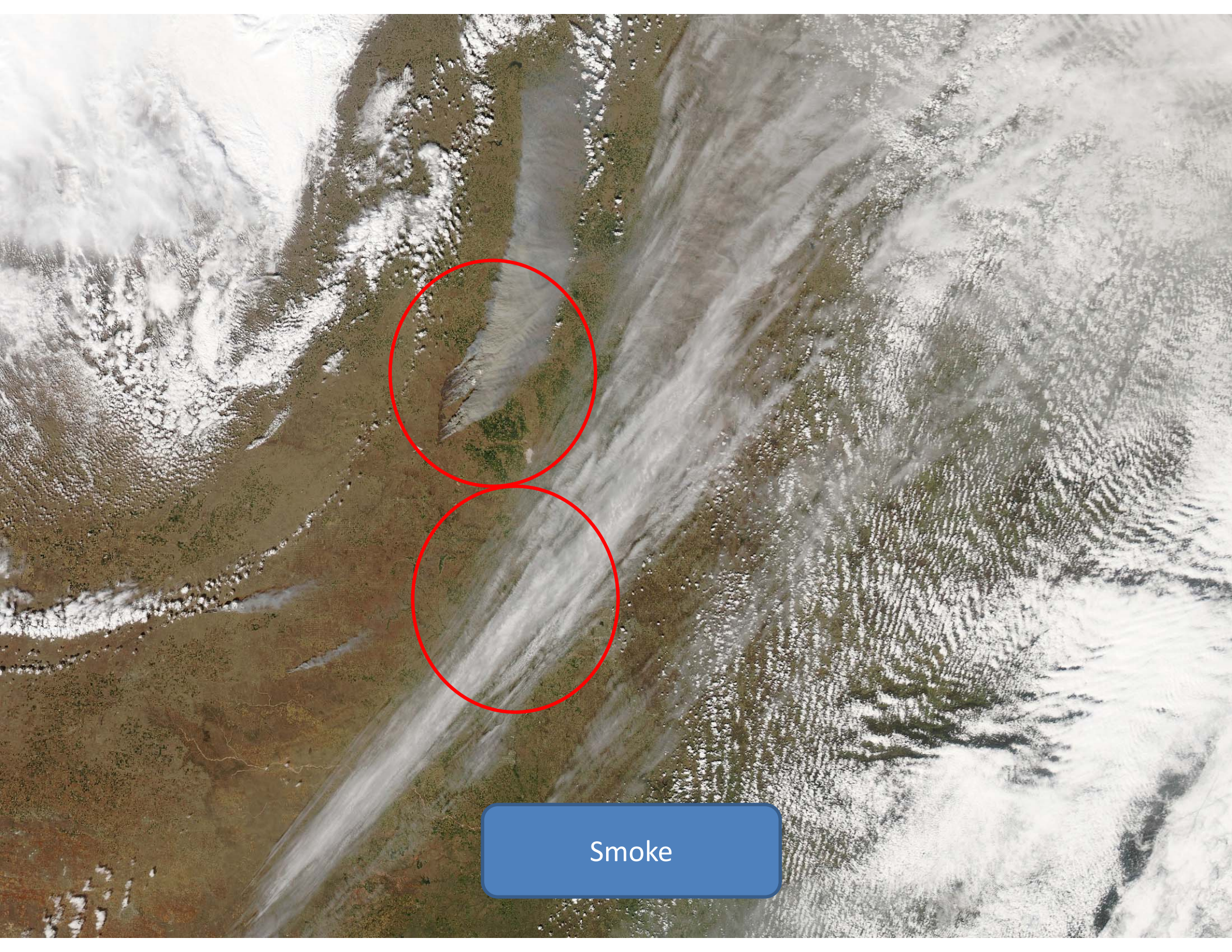
Analysis

By

Tarendra Lakhankar



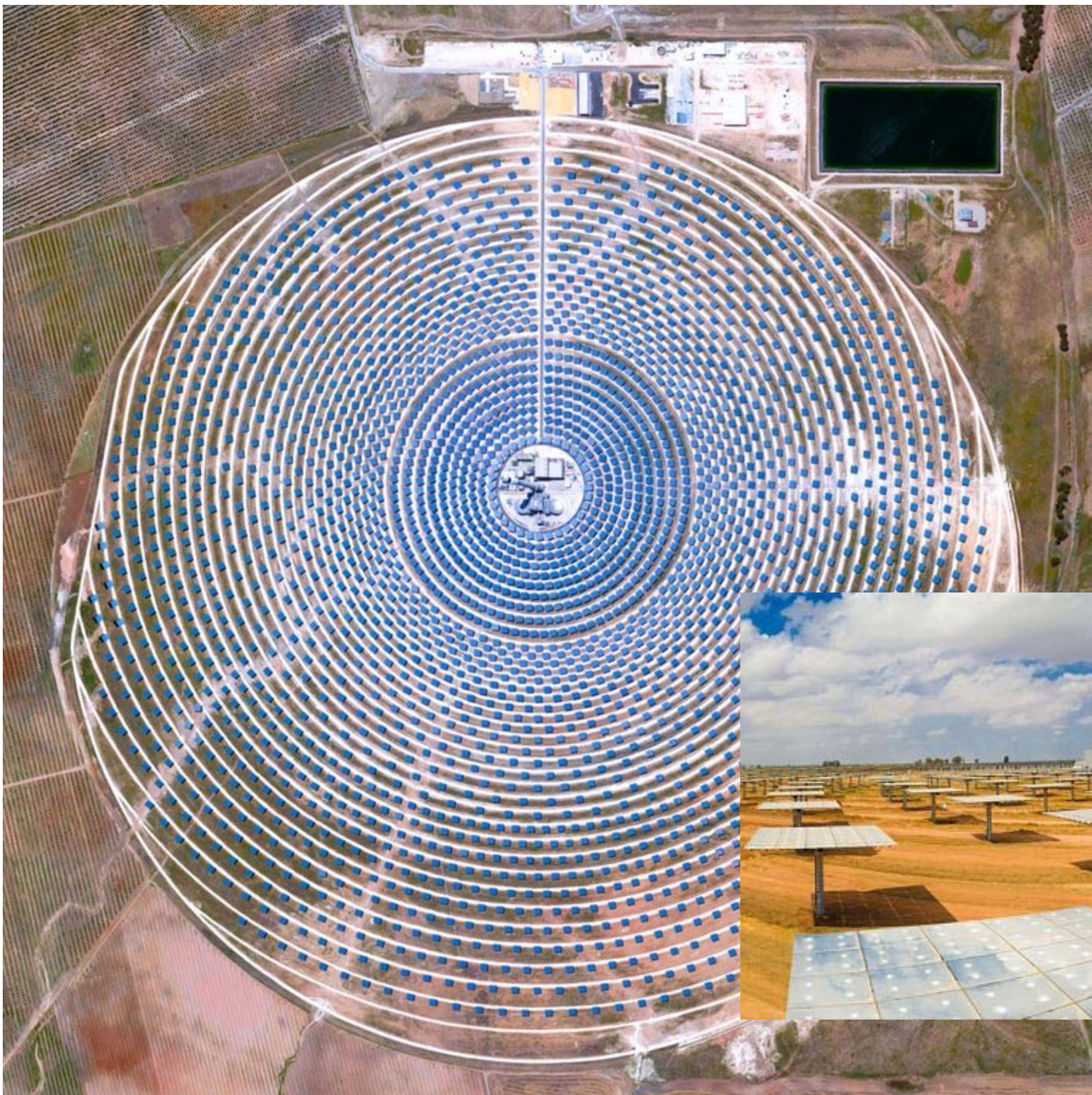
Set 1



Smoke



Diamond mine yawns in eastern Siberia.



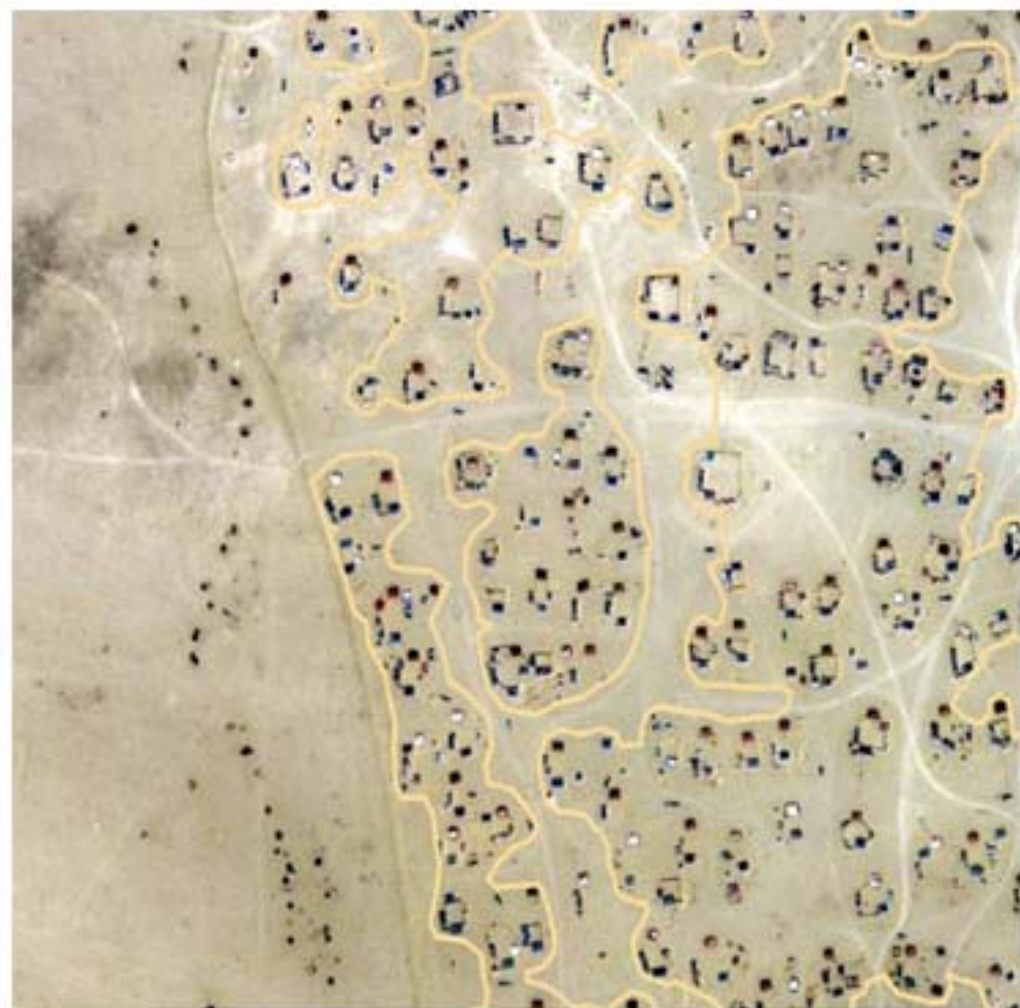
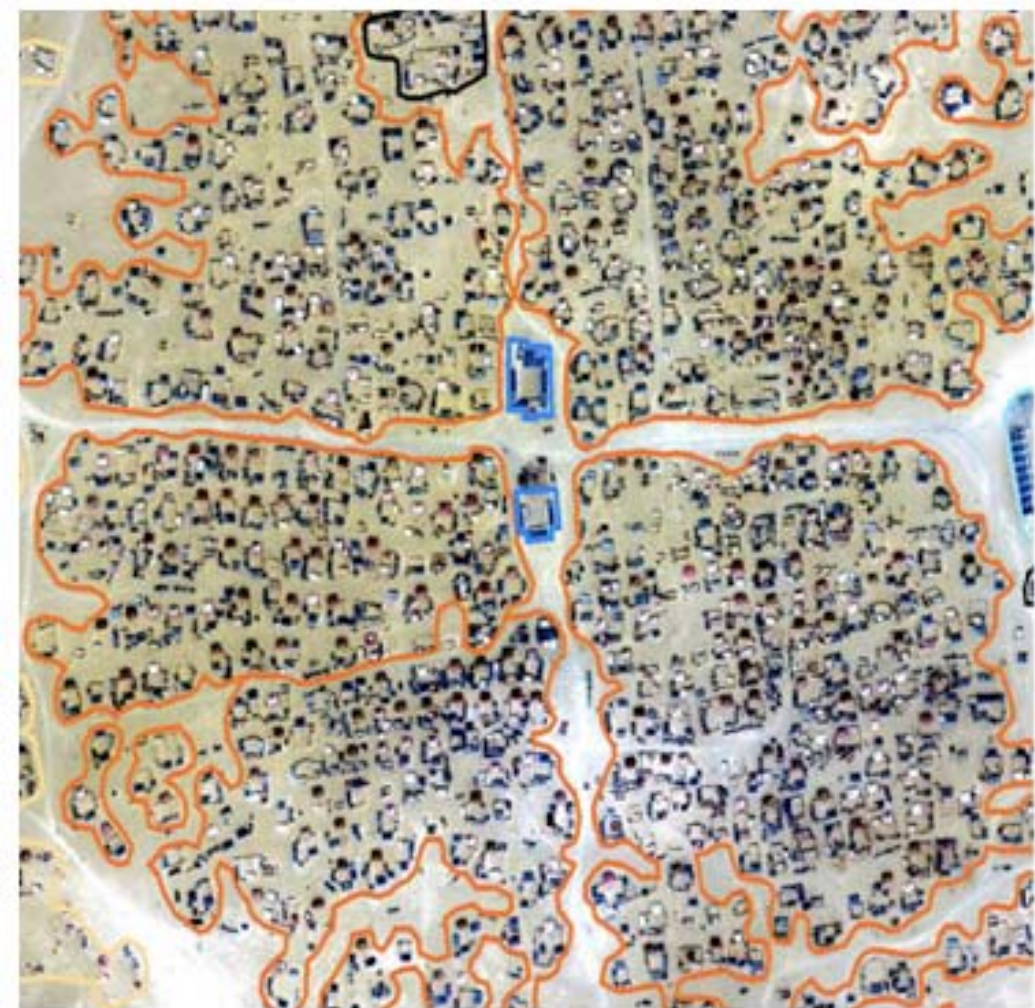
massive
Gemasolar
Thermosolar
Plant in Seville,
Spain





Pivot-irrigation fields





Refugee camp



Connecticut River

Thames River

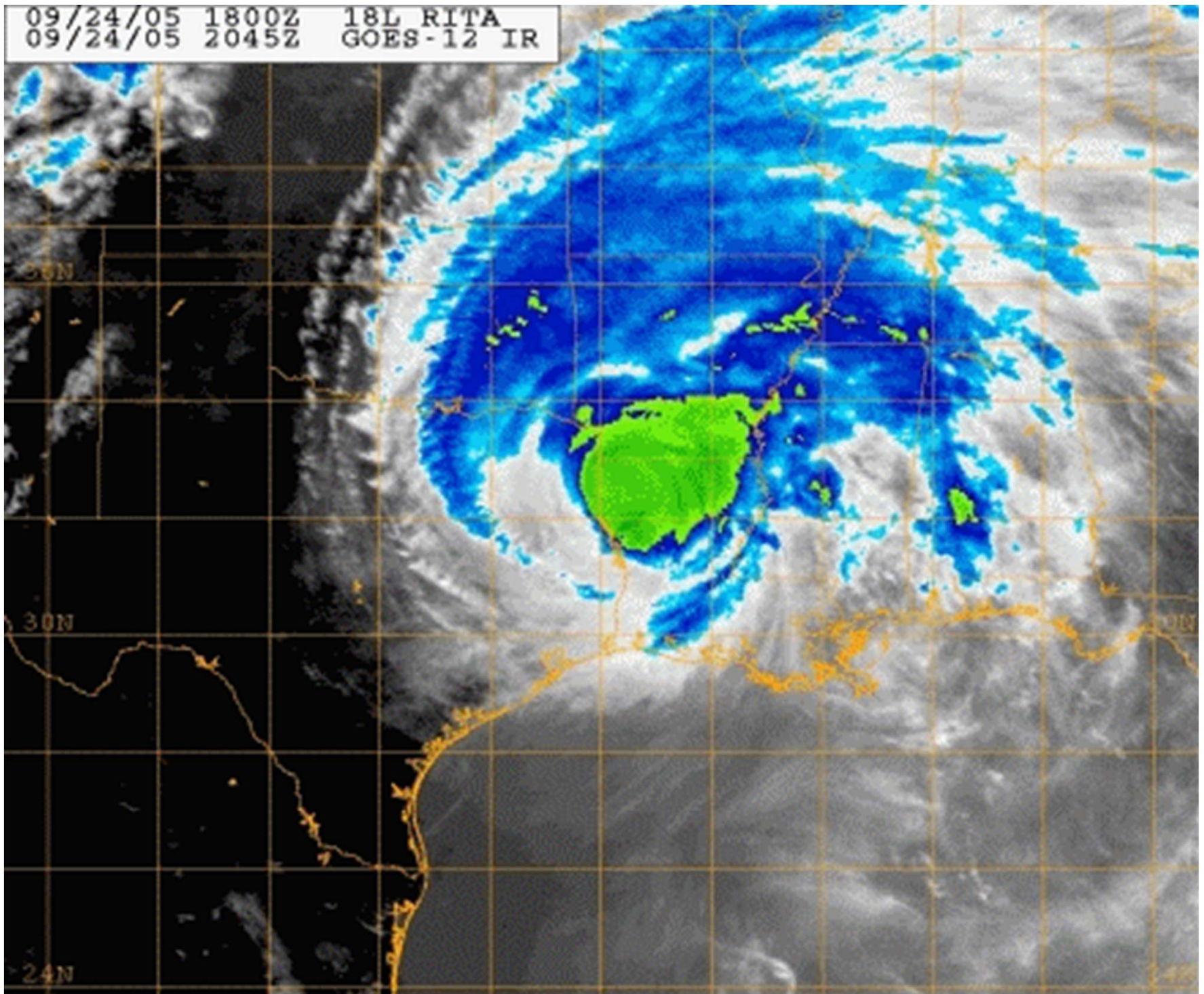
Long Island Sound

What is this?

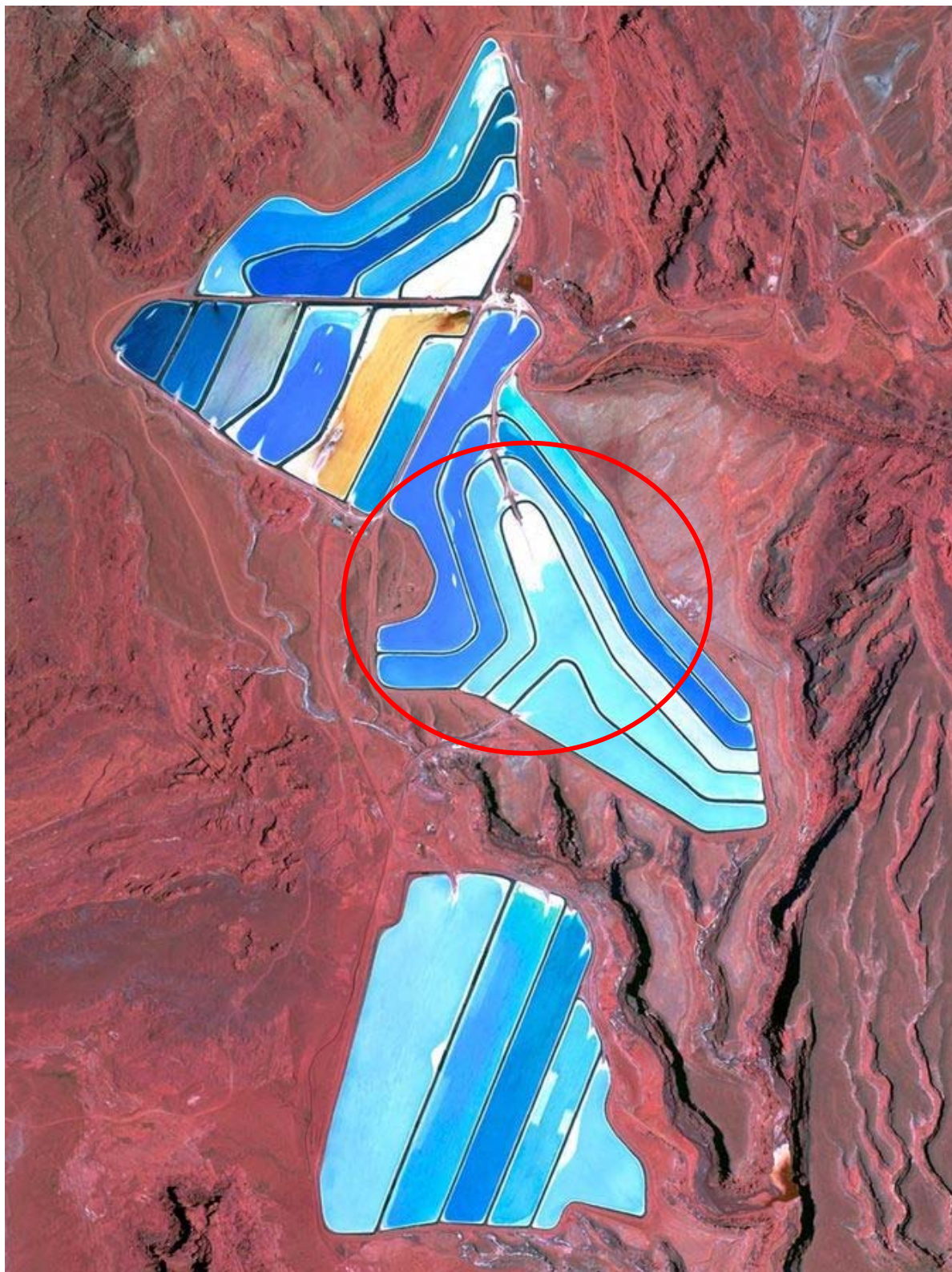


Sediments coming through river

09/24/05 1800Z 18L RITA
09/24/05 2045Z GOES-12 IR



What is the color indicate in the above picture?



Evaporation ponds at a potash mine in Moab, Utah



Olive trees plantations in Córdoba, Spain.



smoke plume



- 1) Water Depth
- 2) Algae/ Chlorophyll

These two images taken from different time, same place.

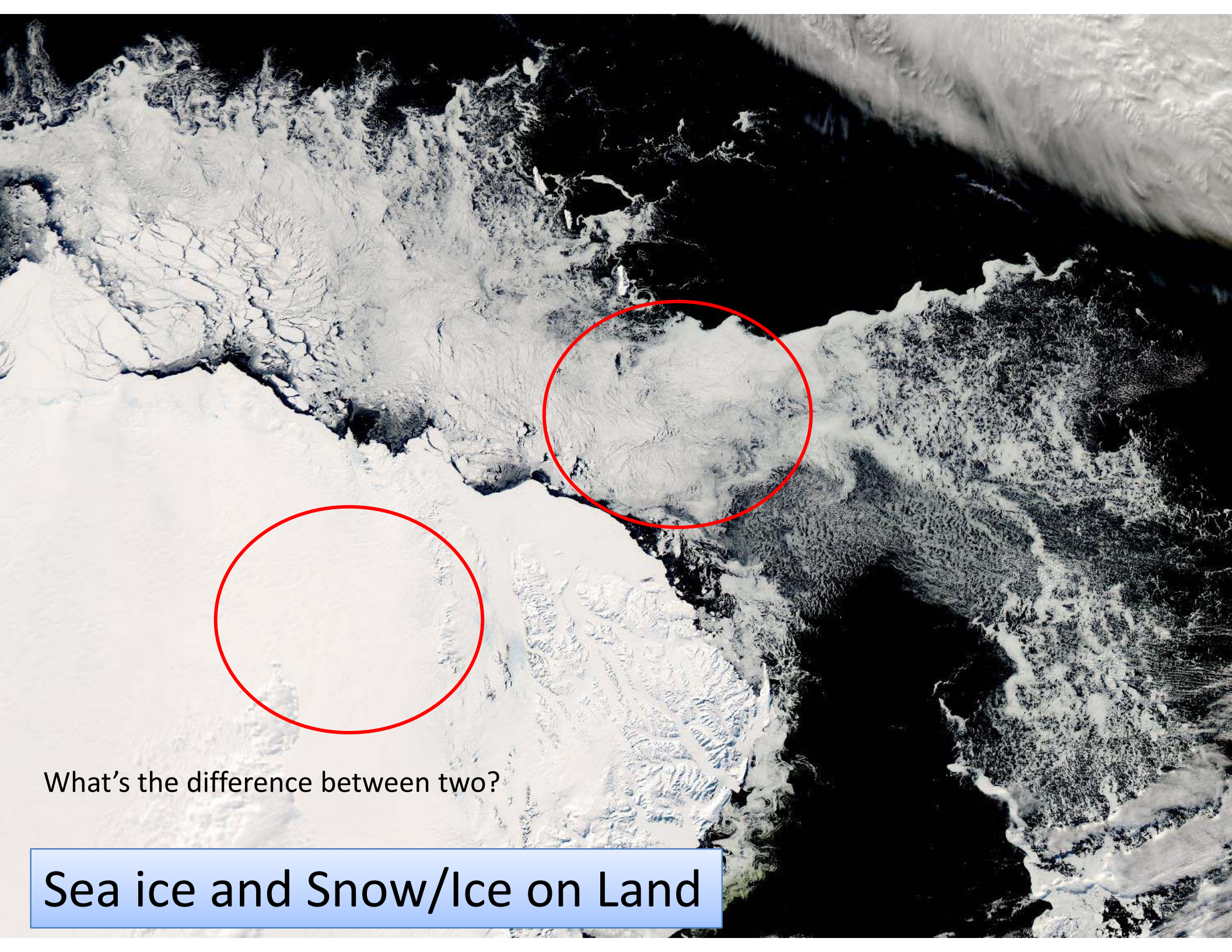
Spot the difference?



Set 2



Oil slick in the Gulf of Mexico



What's the difference between two?

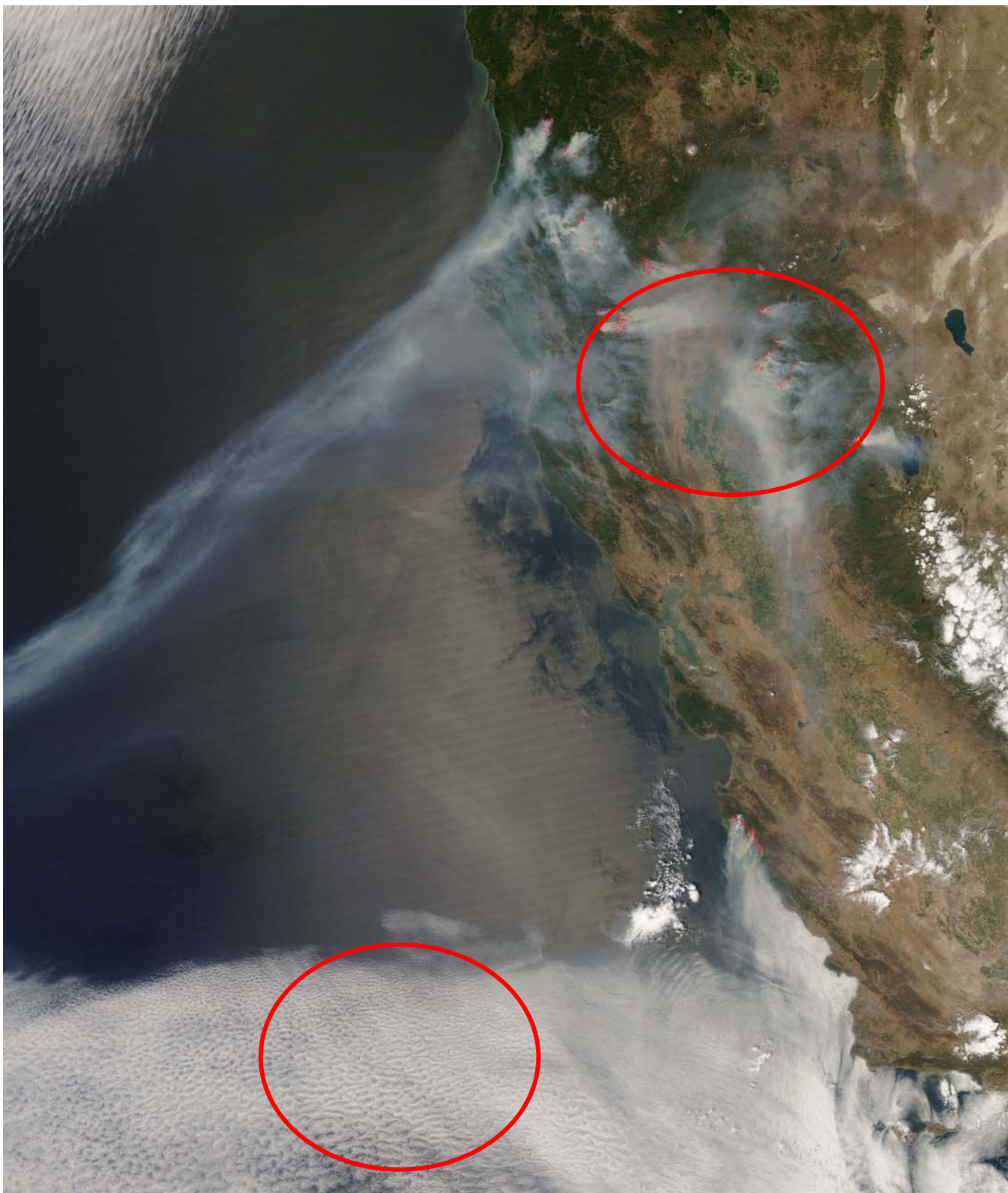
Sea ice and Snow/Ice on Land



Algal blooms in Lake Erie



Air Force Base in Tucson



Are both white objects are same?

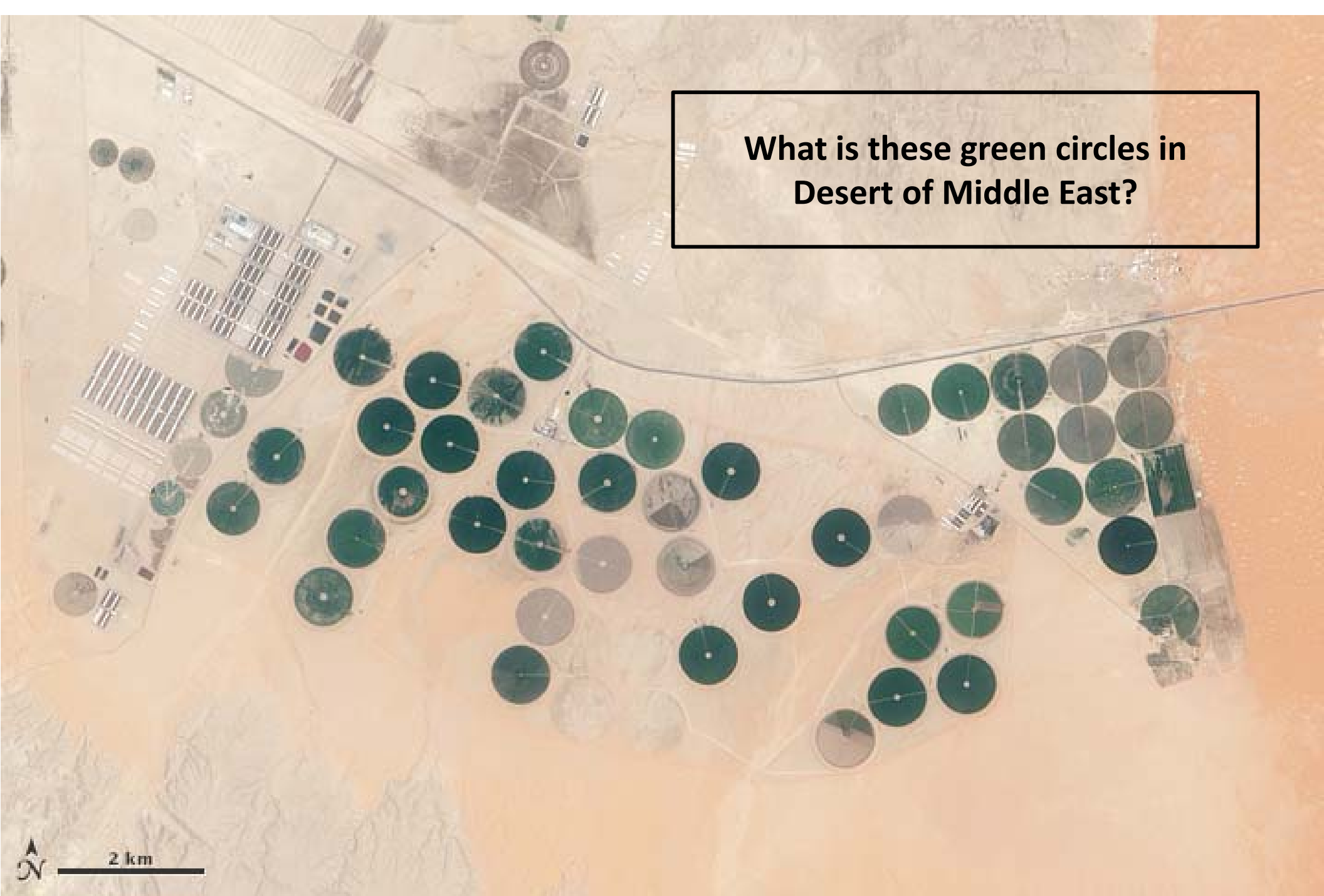


Dry lake



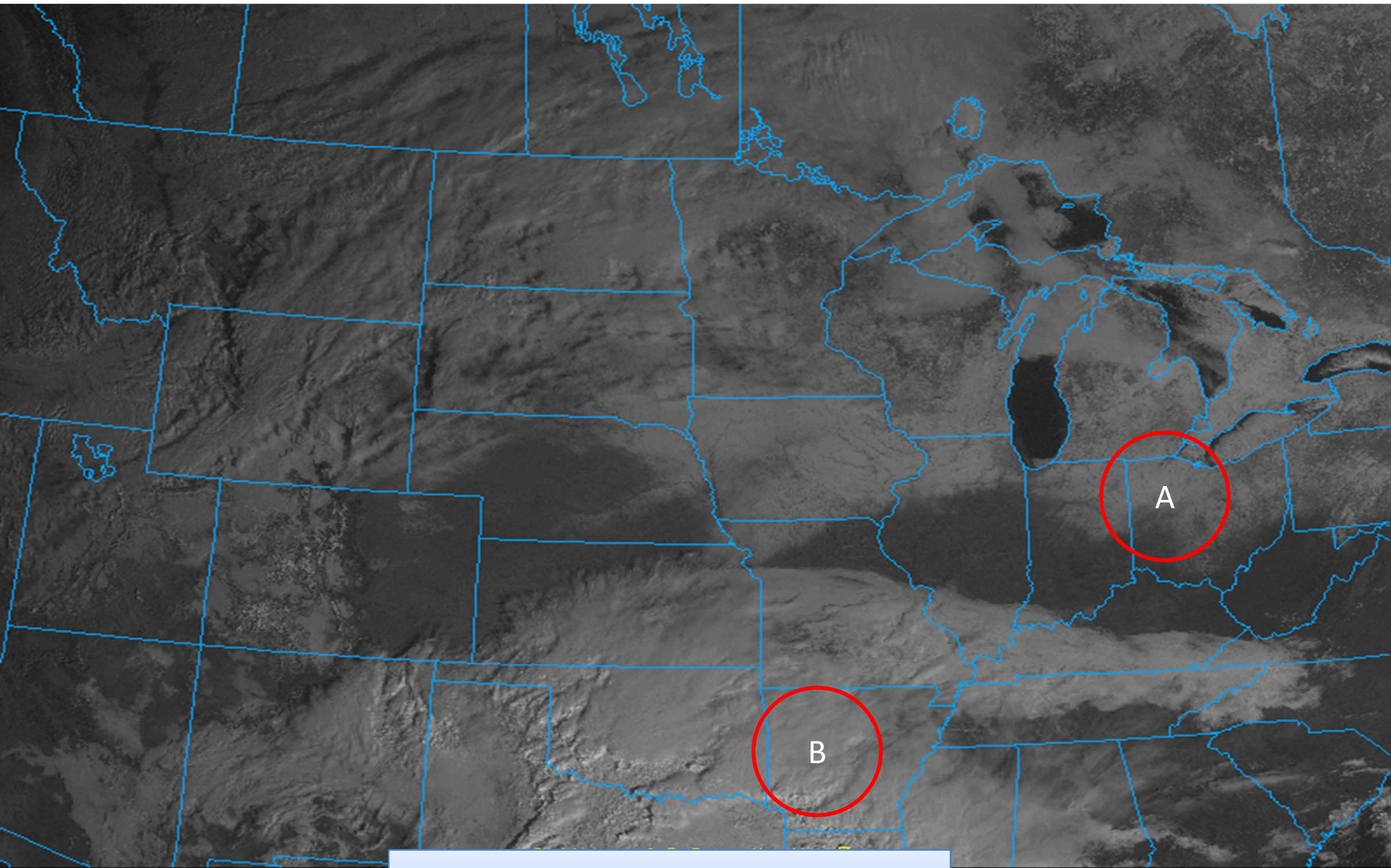
What is object in red circle? Land, Cloud or something else?

Dust storm

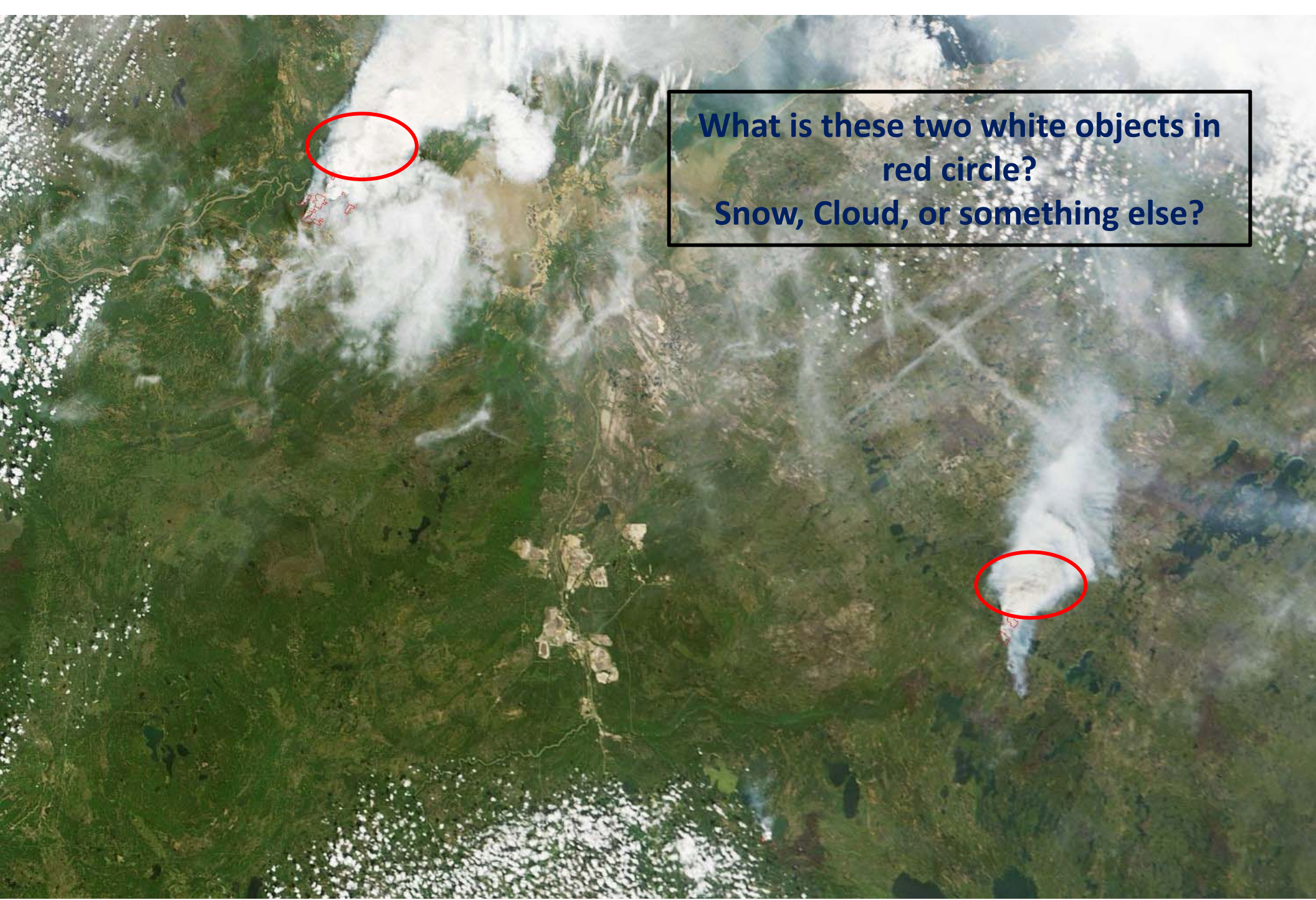
An aerial photograph of an agricultural farm in Saudi Arabia, featuring numerous circular green plots arranged in a grid-like pattern across a desert landscape. The plots are surrounded by light-colored soil and some infrastructure like roads and buildings. A scale bar and north arrow are visible in the bottom left corner.

**What is these green circles in
Desert of Middle East?**

Agriculture farm in Saudi Arabia

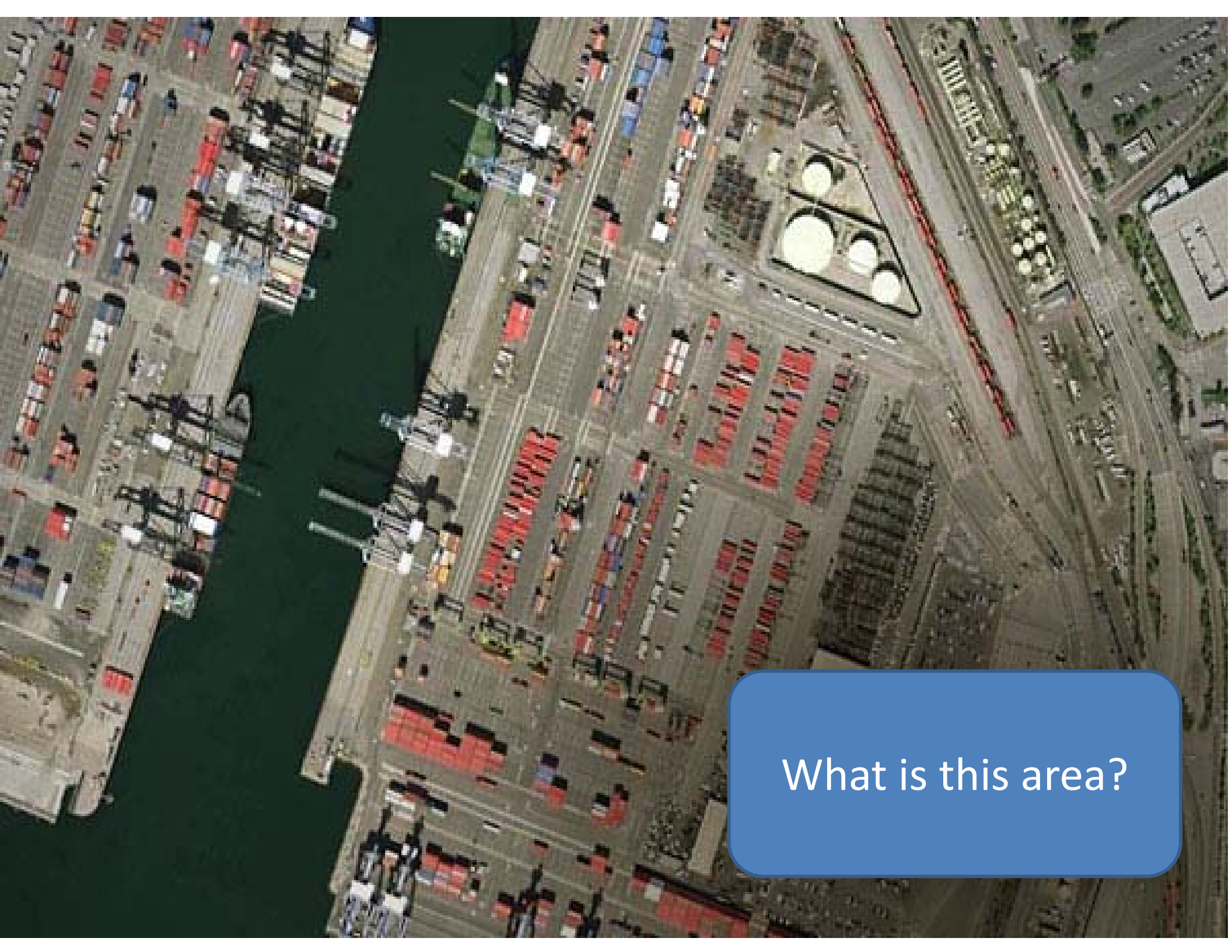


GO 15
Where is snowpack?



**What is these two white objects in red circle?
Snow, Cloud, or something else?**

Forest Fire



What is this area?

Some tips

Visual Image Interpretation tips

The following visual elements are considered in identifying objects:

Tone (Hue or Color)

Brightness or color of elements on an image.

Nothing could be discerned without changes in brightness or color.

Shape

Form, structure or general outline of the objects.

Regular shapes usually indicate human presence and land-use.

Size

Absolute size and size relative to background objects (in context of scale of the image)

Visual Image Interpretation tips

Texture

- Smoothness or roughness
- Arrangement and frequency of tonal variation (eg. A forest is rough while an asphalt or cement surface is smooth)

Pattern

- Spatial arrangement of objects gives a clue to object character (eg. random pattern in forest area vs.

Shadow

- May help determine relative height but may also hinder interpretation obscuring objects within

Association and Site

- Relationship between target and other objects: context of an object may lead to its identification
- Understanding of stratigraphy alters geomorphological interpretation of landscape features

